



ASIAN STUDIES PROGRAM

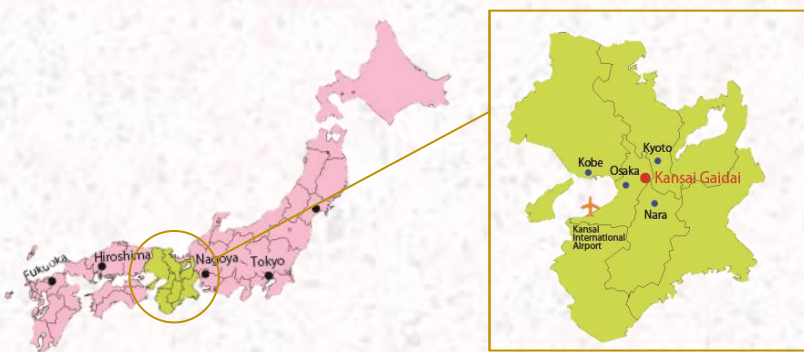
Kansai Gaidai University

OVERVIEW

Established in 1972, the Asian Studies Program today annually welcomes about 750 competitively selected students who represent about 40 countries and regions. Typically, our student body is equally balanced between males and females.

SPECIAL FEATURES

1. Superb Location



Kansai Gaidai is ideally located among the central areas of major cities: Osaka, Kyoto, and Nara where you can experience amazing traditional culture, history, and modern business.

2. Excellent Academic Calendar

The Asian Studies Program follows a typical academic calendar of major overseas institutions in the northern hemisphere:

Fall Semester: Late August – December

Spring Semester: Late January – May

3. 70+ Courses Offered in English

In addition to Japanese language courses, a wide variety of content-based courses from social sciences to business is available in English providing the deeper understanding of Japan and Asia from many different perspectives.

- Japanese language courses (from level 1 to 8)
- Content-based courses
- Studio art courses: Ceramics, Manga Drawings, Koto (Japanese Harp)



Quick Facts of the University

1. Founded in 1945
2. Located in Osaka, Japan
3. Approx. 12,000 students
4. More than 1,300 students study overseas annually
5. Over 750 international students come to study at KGU annually
6. More than 390 partner institutions in 55 countries/regions.

Campuses



Nakamiya Campus

16-1 Nakamiyahigashino-cho,
Hirakata-shi, Osaka 573-1001
Japan



Gotenyama Campus Global Town

6-1 Gotenyamaminami-machi,
Hirakata-shi, Osaka 573-1008 Japan

Each campus is walking distance
(approx. 15 minutes)

4. Amazing Internship Opportunities

Real life experience in Japanese business firms and local schools is available at the Asian Studies Program. Exchange students of Spring semester have an opportunity of first-hand experience of working in Japan in June and/or July.



Host Companies, Schools, and Governmental Offices.

- AIG Japan Holdings K.K.
- KCJ GROUP INC. (KidZania)
- Kubota Corporation
- KYOCERA Document Solutions Inc.
- Nippon Express Co., Ltd.
- The Royal Hotel, Ltd.
- Hirano Elementary School
- Hirakata High School
- Hirakata Foundation for Culture and International Exchange
- The American Chamber of Commerce in Japan Kansai Chapter



The above internship sites are some of many companies who have Accommodated our interns and are subject to change without notice.

5. Housing

International students have two types of housing arrangements: Homestay, an excellent learning experience through interactions with a Japanese family or GLOBAL COMMONS 結 -YUI-, an international resident hall living with local students. Both arrangements provide students with many opportunities to experience Japanese life and culture first-hand.



TUITION & FEES PER SEMESTER

Category	Amount
Tuition	Waived by exchange agreement
Homestay* (2 meals/day included)	JPY320,000 (Approx. USD2,910)
GLOBAL COMMONS 結 -YUI-*	JPY230,000 (Approx. USD2,090)
International Student Residence (kitchen facility available)	
General Deposit (Refundable)	JPY10,000
International Student Fee (Mandatory)	JPY10,000
Liability Insurance (Mandatory)	JPY1,000

*Waived for students from institutions, which have full exchange agreements with Kansai Gaidai. [USD1=JPY110]



Application Information for Spring Semester, 2021

ASIAN STUDIES PROGRAM

Center for International Education, Kansai Gaidai University
16-1 Nakamiyahigashino-cho
Hirakata-shi, Osaka 573-1001, Japan



General Information

NOMINATION & APPLICATION PERIOD

For Spring 2021 Enrollment: August 1- November 1, 2020

Decision about the style of the program (in-person/online) will be made in the middle of October.

[Website]

<http://www.kansaiheidai.ac.jp/asp/>

[E-Mail]

kgu-in01@kansaiheidai.ac.jp

[Telephone]

81+ 72-805-2831

REQUIRED APPLICATION DOCUMENTS

【Part A】 Must be submitted by a nominated student

Item	Note
On-line Application	Must be Completed on GAIDAI-Link
Essay* ¹ & Japanese Language Background Questionnaire * ²	Accepted by E-mail
Identification Photograph Passport type identification photo, full face and neutral background.	Send only 1 photo in jpg.file File name should be your 5-digit Admission Number _ Name
Passport Copy	Accepted by E-mail
Academic Transcript (Unofficial accepted)	Accepted by E-mail, screen shot, scanned copy. Your name, University name and GPA must be indicated.

*¹ required for all students. *² only applicable if studied Japanese before.

【Part B】 Must be prepared by persons other than the nominated student.

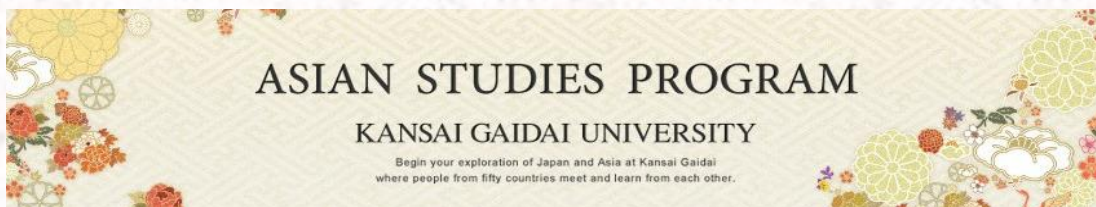
Please wait to prepare the following documents until mid-October when our program format for the spring (in person or online) will be announced.

Item	Note
Two Recommendation Letters from Professor/Instructor of University level	Accepted by E-mail directly from your professor/instructor
Japanese Instructor's Reference Form From Professor/Instructor of University level	Accepted by E-mail directly from your professor/ instructor (Counted as one of the required two recommendation letters).
Official Academic Transcript	Original Transcript required upon arrival to KGU
Medical Information Form	Accepted by E-mail

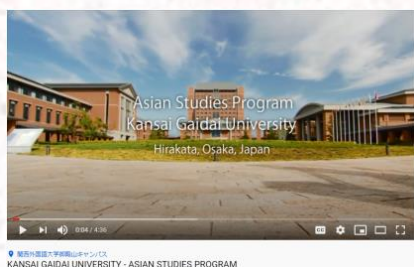
For more information: <http://www.kansaiheidai.ac.jp/asp/admission/procedures/>

USEFUL LINKS TO ASIAN STUDIES PROGRAM WEBSITE

Click the image to open the link!



【Promotion Video】



【Program Brochure】



【Academic Calendar】



【Course Offerings】



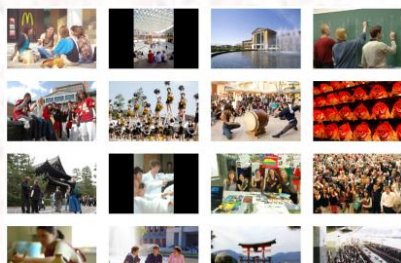
【Housing】



【Internship Program】



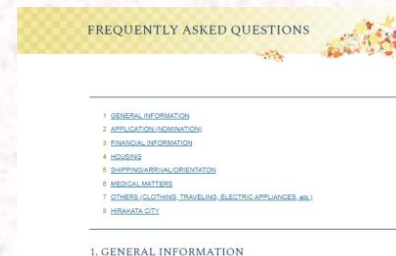
【Photo Gallery】



【Summer Program】



【Frequently Asked Questions】



Center for International Education
Kansai Gaidai University